



# **Beverley Square West**

## **Homes Not Landmarked**

**Beverley Road, Stratford Road, Westminster Road,  
Matthews Court, Lewis Place**

## REAL ESTATE.

**MATHEWS PARK****Flatbush.**

**Avenue B to Avenue C and  
Coney Island Avenue.**

1—This property is offered for sale with restrictions against nuisances.

2—To insure fine improvements, the gas and water pipes have been laid, free of cost to purchasers, and no building can be erected that will cost less than \$3,000. A main sewer runs through Avenue B and will soon be commenced on Avenue C.

3—The streets, sidewalks and sodding have been finished in the very best manner, making this the most expensively laid out plot in the town of Flatbush.

4—Every lot is within easy access of Brooklyn by the Flatbush avenue and Coney Island and Brooklyn (Smith street) electric lines, and will be directly connected with the bridge by the Brighton Beach road and Kings County Elevated.

5—The property will be sold in plots of 50x100, or more, and but one dwelling can be erected on each fifty feet, thus guaranteeing detached residences and the best class of residents.

6—The prices are marked at a moderate figure to secure quick buyers.

7—Titles insured by the Title Guarantee and Trust Company free of charge to purchasers.

8—Special terms will be made to purchasers of eight or more lots.

CALL ON OR ADDRESS

**D. & M. CHAUNCEY,**  
Real Estate Company, Limited

207 Montague st. or 189 Seventh av.

ance, in the discretion of the Mayor.

For each menagerie, \$500, or \$500 for each exhibition, in the discretion of the Mayor.

For each combined circus and menagerie, each day of exhibition or performance, in the discretion of the Mayor.

For each common show, \$25.

For each theater, opera house, playhouse or amusement, where it has seating 750 people or less, \$75, where it has seating more than 750 people, \$150; but the opera house, playhouse or other place of amusement, as herein used, shall not be so construed as to include a building or buildings, or other entertainments are held than such as churches, societies and benevolent societies, in the discretion of the Mayor.

For each pawnbroker, \$500.

For each auctioneer, \$100.

For each intelligence office, \$25.

For each railroad car, \$20.

For each stage or omnibus, \$15.

For each billiard or pool table, \$3.

For each peddler or hawker, \$3.

For each loading alley, \$5.

For each shooting gallery, \$5.

For each slaughter house, \$25.

For each junk dealer, \$3.

For each hackney coach, \$3.

For each cab, \$1.50.

For each ticket speculator, \$100.

For each expressman, \$3.

For each public cart, \$1.50.

For each truck, \$2.

For each dirt cart, 50 cents.

For each driver of cab, hack or omnibus or owner, \$1.

**ALL EXISTING LICENSES EXPIRE TO 1894.**

**DOG LICENSES.**—Public notice is hereby given to persons to whom licenses have been granted for the keeping or keeping of any dogs in Brooklyn, that the said will terminate and expire on the first day of May, 1894. Any person who shall neglect to obtain a license for the keeping of said city shall forfeit and pay the sum of \$10. Dog licenses and tag, \$1.10.

**FIREWORKS.**—Wholesale dealers, \$10; retail, \$2.

Applications for licenses must be made to the Bureau, Room 2, City Hall, City Clerk's office.

Peddlers and junkmen are requested to have their vehicles on Fulton street, east side of City Hall, for inspection, and to have the number of their vehicles properly painted on said vehicles, in accordance with the ordinances. Hawkers and junkmen must have badges at the time of making application for licenses.

Only bankable money received for licenses \$1.60.

JOSEPH BENJAMIN.

**STREET NOTICES.**

**NOTICE IS HEREBY GIVEN** of the intention of the Common Council of Brooklyn to pass ordinances to fence the lots lying on the south side of Madison street between Throop avenue and Sumner avenue, known as lots 72, 73, 87 and 131 block 8, Twenty-third Ward. Also, fencing lots on the south side of Herkimer street between Prescott place and Bancroft place, known as lots Nos. 21, 22 and 23 block 163, Twenty-third Ward.

Also fencing lots on the east side of Herkimer street between Atlantic and Atlantic streets, known as lot No. 21 block 163, Twenty-fifth Ward.

Also fencing lots on the east side of Ham street between Myrtle avenue and Stanhope street, known as lots Nos. 44 and 45, block 55 Twenty-eighth Ward, with a close board fence six (6) feet high, at the expense of the owner or owners of said lots.—Dated Brooklyn, April 9th, 1894.

ALFRED T.

**This is us!!! Please note trends, architecture, culture and history:**

- Over 30% of the houses in Beverly Square West have been restored: asbestos siding removed, original clapboard and shingles exposed, porches opened up, now looking more like the original designs. 70% of these homes retain their original details and character, as columns, sloped roofs, open porches, clapboard and shingles.
- Some homes serve as musical, theatrical, artistic, literary and horticultural organizations that benefit all of NYC.
- Many homes are multi-generational with the same owners for 30, 40, and 50 plus years.
- There is tremendous support for expanding the landmarking study throughout BSW; 97% of those surveyed were in favor of landmarking. We are united and strong...and want to protect our precious community that includes Westminster, Stratford, all of Beverley and the Court Streets.
- These streets were the first to be developed in Victorian Flatbush, with lots advertised in 1894, and some homes completed by 1895.

**This is an example of a street that was *included* in the study area:**



**A block away, this street was *excluded*:**



**We welcome development of both affordable and market rate apartments. Our 2009 rezoning created corridors that allowed for construction of six plus story buildings on Coney Island Ave (CIA) without destroying historic architecture.**

**CIA and BEVERLEY ROAD looking east; a site being prepared for construction of a block-long apartment building**



**The following catalogue shows every property that has been left out of the proposed study, first in *2011* and then in *2025*. These homes have the same historical and architectural significance as those that are being studied, and are in urgent need of protection.**

**Thank you for your time and consideration.  
Residents of Beverley Square West**

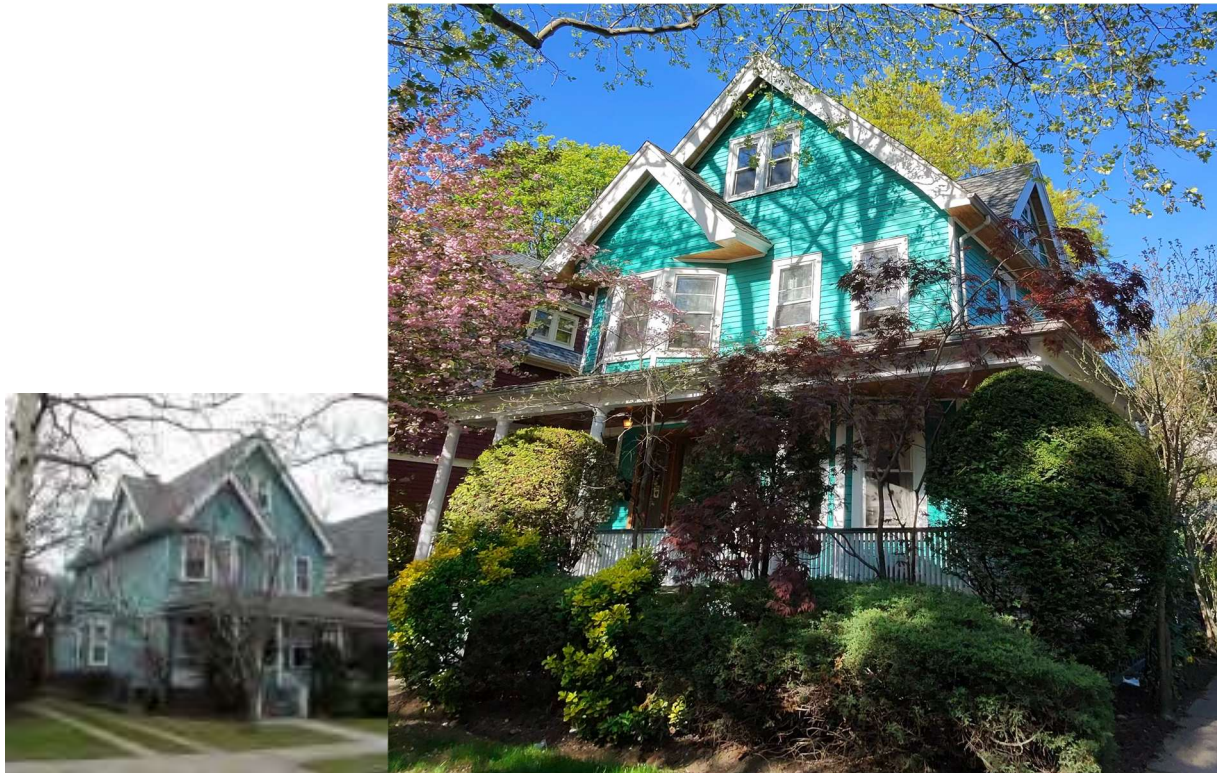
## 215 STRATFORD ROAD

YEAR BUILT: 1904

INFO: 3 story wood frame Victorian

NOTABLE SITE FEATURES: Many mature trees including fruit trees

HISTORY: Only 4 owners from the time it was built



- Jun 28 Joseph Alan Feely a member of Shakespearean drama stock company (Brooklyn Times Union).
- 1904 Feb 7 Gordon Livingston Grant with Montague Dramatic Society (Brooklyn Times Union).
- 1904 May 24 Catherine Feely wife of late Matthew M. Feely dies at 215 Stratford at age 54 (Brooklyn Daily Times). Michael M. Feely was a carpenter, an Irish immigrant.

Times Union  
Sun, Jun 28, 1903 ·Page 8

The Montague Dramatic Stock Company, at its initial meeting on Tuesday evening, at the home of Joseph Alan Feely, 215 Stratford road, elected the following officers of the company: Presi-

## 209 STRATFORD ROAD



- 1909 May 5 Lawrence F. Killian a designer for Hayden & Co - son of Lorenz - dies in 209 Stratford home at age 25 (Brooklyn Eagle)
- 1914 Mar 21 209 Stratford burglarized - home of Lorenz Killian wealthy furniture manufacturer (Brooklyn Eagle)
- 1936 Nov 25 Obit for Lorenz Killian - one of the country's leading designer of furniture dies at 209 Stratford (Times Union)
- 1954 Nov 24 Captain Henry Donnelly of 209 Stratford awarded Bronze Star at Fort Sam Houston [4th highest combat award] (Brooklyn Eagle)

*I grew up coming to this neighborhood to see my grandmother, Lena Dubensky (who lived at 1409 Albemarle) and my aunt (Claire Bodian), uncle and cousins at 125 Stratford Road.*

*I moved here because these houses are works of art as well as homes.*

*We have worked to maintain our home as it was. The only change we made was to turn a pantry into a half bath and we upgraded the bathroom on our second floor. Even our kitchen is the same layout as when we moved in. Also, the same plants Mrs. Sloan left us in the front. The exterior is completely original.*

## 221 STRATFORD ROAD

YEAR BUILT: 1901

INFO: Two family wood shingle Victorian



- 1906: Houses for sale by Harry B. Hawkins, Builder, residing 221 Stratford.
- 1910 Sep 3 Harry B. Hawkins 221 Stratford registers a 1909 Pope auto (Brooklyn Life)
- 1915 Oct 12 Harry B. Hawkins 221 Stratford to principal of new Flatbush Savings Bank (Eagle)

Brooklyn Eagle  
Tue, Oct 12, 1915 ·Page 16



be

*Built in or around 1901, this elegant Victorian has had only three owners. We are the third and have lived here for almost fifty years, purchased in 1976. Grandchildren from the previous owner still keep in touch and, when in My home has been used, over the years, in several film productions including Michael Douglas' Solitary Man and right after 9/11 - a NYC commercial promoting Wall Street.*



## 229 STRATFORD ROAD

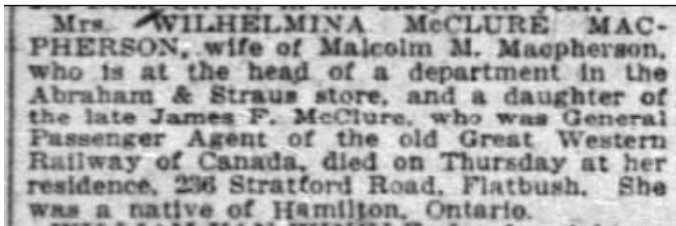


- 1905 Dec 12 Ad for maid/cook at 229 STRATFORD ROAD (Brooklyn Eagle)
- 1907 Jul 8 Realtor Charles L. Lang of 229 Stratford chosen for service on Brooklyn Grand Jury - told by judge to “get after burglars” (Brooklyn Citizen)
- 1910 Jul 30 229 Stratford sold by Susie L. Perez to Andrew J. Steel secretary of Steel-Drake Baking Co, son of its President, George H. Steel, who founded the company in 1901 with headquarters in the Wallabout Market of Williams

## 236 STRATFORD ROAD



The New York Times  
Sun, Feb 25, 1917 · Page 19



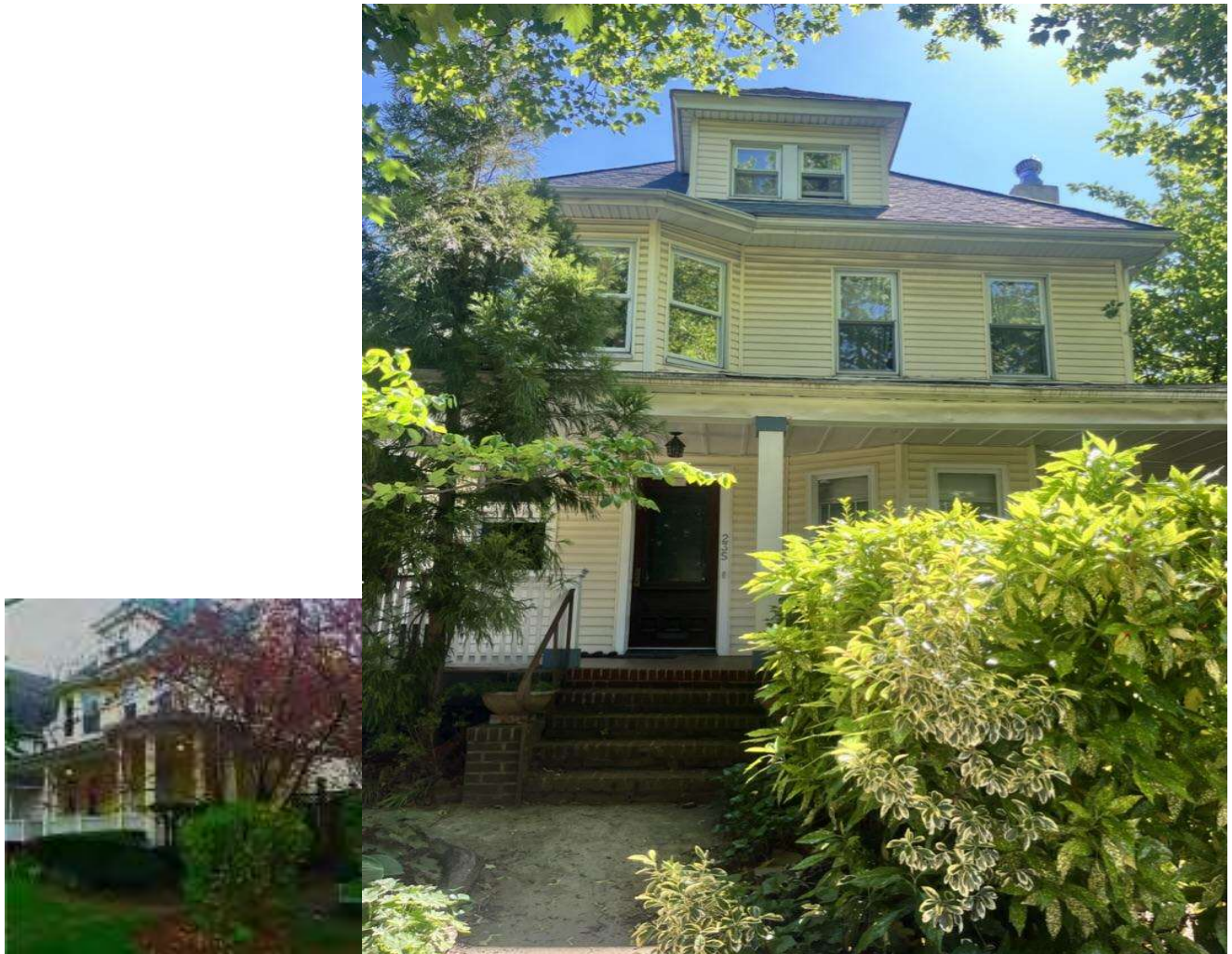
- 1904 Oct 21 Malcolm M. & Wilhelmina MacPherson suffer loss of 8 month old son at 236 Stratford (Eagle)
- 1917 Feb 25 Obit for Wilhelmina McClure MacPherson - daughter of an exec of the Great Western RR of Canada - husband Malcolm is A&S Department Store manager (NY Times)
- 1923 Malcolm M. MacPherson & family members of 236 Stratford incorporate MacPhersons Builders Inc (Eagle)

*Aaron Dessner of Brooklyn-based band Grammy Award winning band, [The National](#), owned and restored this home from 2003-2016. The garage served as the band's recording studio. Much of the music that brought them to fame was written in this house and recorded in the garage which was converted to a recording studio.*

## 235 STRATFORD ROAD

YEAR BUILT: 1898

INFO: 3 story, wood construction, with wrap around porch.



## 241 STRATFORD ROAD

YEAR BUILT: 1898

INFO: Dutch Colonial, 2.5 story, with open wrap around porch.

Diamond shaped panes on attic windows.



## 242 STRATFORD ROAD

INFO: 3 story, wood construction, with Bay windows on 1st and 2nd floor.

RELATED SITE STRUCTURE: Garage, being outfitted with clear roof.



## 247 STRATFORD ROAD

YEAR BUILT: 1900

INFO: 2.5 story, wood-frame, Folk Victorian with cross-gable bay window, two surviving stained glass windows



Home of [The Flatbush Gardener](#)  
Certified Pollinator and Wildlife Habitat

## 253 STRATFORD ROAD

YEAR BUILT: 1900



*We have owned our home, 253 Stratford Road in Beverley Square West (BSW), Brooklyn, since November 1990. We are the second owners of our home, since the original owner, Otto Fix had it built between 1899-1901 and it was passed on to his daughter Dorothy Graham, who at the age of 88 decided to relocate down south with her daughter. We purchased our home because of the unique historic character of the neighborhood and raised our two children in this home.*

## 259 STRATFORD ROAD

YEAR BUILT: 1898

INFO:: 2-family, 3 story, Victorian, with 2 stained-glass windows



## 260 STRATFORD ROAD

INFO: 3 stories, Dutch Colonial, 2-family. Large gables with Dutch-style roofs on 2nd floor.



## 264 STRATFORD ROAD

NOTABLE SITE FEATURES: Bay windows on 1st and 2nd floors.



## 265 STRATFORD ROAD

INFO: 3 story Queen Anne



## 271 STRATFORD ROAD

INFO: 3 story Dutch Colonial



## 277 STRATFORD ROAD

INFO: 3 story Queen Anne



Home of [Hawthornden Foundation Literary Society](#) providing residencies for writers, public readings, and summer programs for NYC High School students. This house was fully restored and made wheelchair accessible.

## 289 STRATFORD ROAD

INFO: 3 story Victorian



*I bought my home, 289 STRATFORD ROAD, in 1990. The Department of Buildings has it listed as being built in 1925, but I have documents showing it was actually built in 1906. I don't know who the architect was.*

*We were a little disappointed that the house was lacking in Victorian details, so we worked to restore them. The house was covered in asphalt siding which we removed to expose the original wood shingles and clapboard and then painted the house in historic colors. A staircase with an outside entrance on the side of the house had been added to give private access to a third-floor apartment.*

*The interior staircase traveled from the first floor up through what had been a second floor bedroom to reach the third floor. We removed the outside door and the staircase and built a staircase to the third floor where it had originally been. This restoration included reclaiming the second-floor bedroom, finishing it with period woodwork and wood flooring to match the rest of the house. The porch had fallen into disrepair and was completely rebuilt a few years ago.*

*The new porch was built to replicate the original with the same railing style, pillars, steps, and clapboard cheeks on the sides of the steps. I recently replaced the garage doors which were in bad repair. The new doors are a replica of the original ones.*

## 290 STRATFORD ROAD

YEAR BUILT: 1898

INFO: 3 story wood frame Victorian with wrap around front porch, two stained glass windows, original oak and beveled glass front door, porch columns, two side and two front bay windows, wood front steps with cheeks. The foundation of the house was made from leftover granite blocks from the Brooklyn Bridge construction.



*The Victorian lighting request we made to our local officials resulted in a greatly improved aesthetic of the entire community. Many of the local politicians who helped with the effort to get the Victorian lighting approved came to our community meetings with updates about our street light request and we were successful, thanks to them. What the local elected officials took into consideration then was that all 5 blocks in BSW had a large concentration of Victorian-era houses and that the majority of residents in the community had a strong desire to maintain their Victorian homes.*

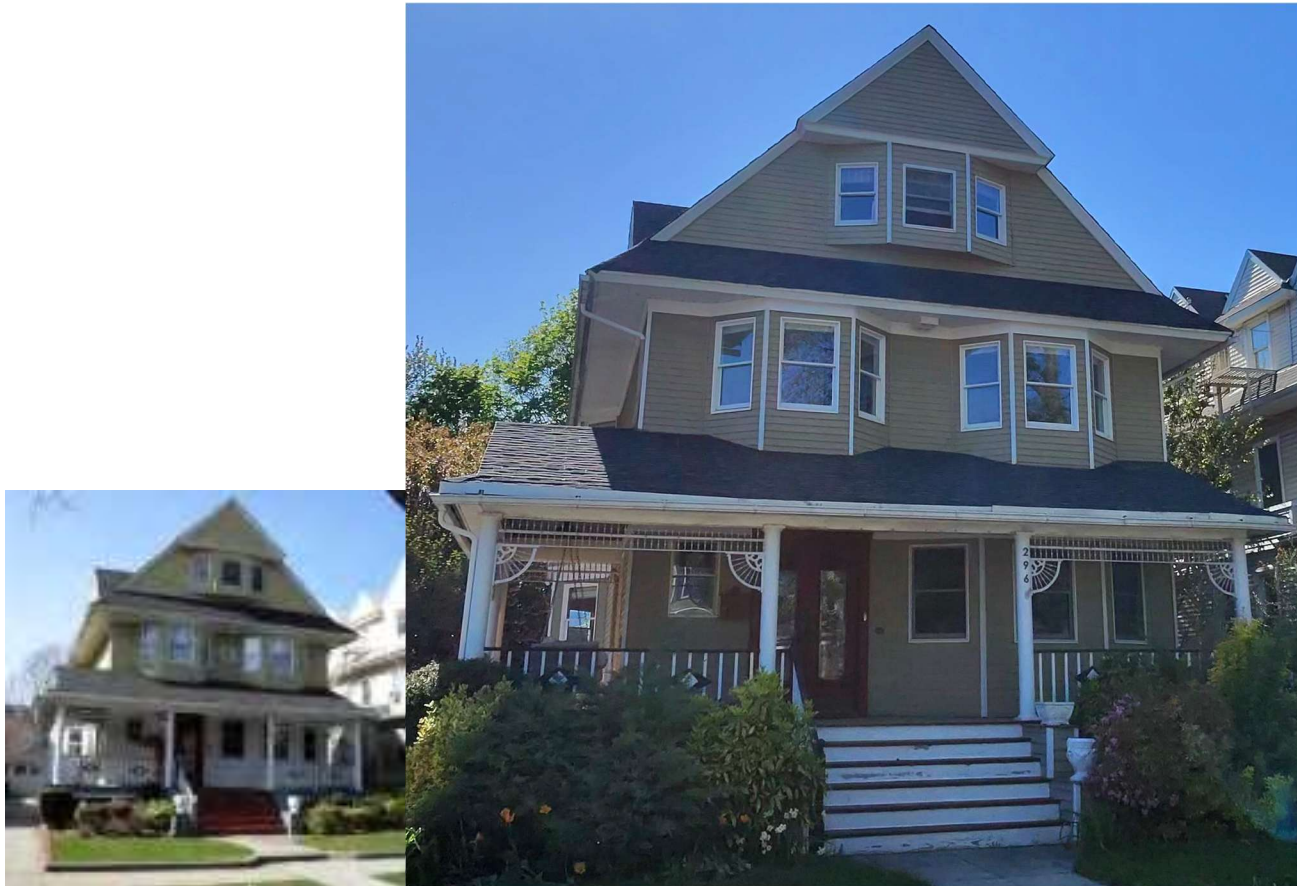
*Additionally, the elected officials were impressed that all 5 blocks in the neighborhood were lined with tall, gorgeous, full trees, and that under Bloomberg many BSW residents requested more trees via the MillionTreeNYC initiative.*



## 296 STRATFORD ROAD

YEAR BUILT: 1893

INFO: 3 story, one family, Victorian with wood, bricks, gingerbread wooden porch and accessories. The foundation of the house was made from leftover granite blocks from the Brooklyn Bridge construction.



*I've lived in this house since Dec. 1970 with my two children and husband.*

## 301 STRATFORD ROAD

INFO: 3 Story Victorian



**302 STRATFORD ROAD**



## 307 STRATFORD ROAD

INFO: Dutch Colonial



This house had the original hayloft for horse feeding in the garage.

## 308 STRATFORD ROAD

INFO: Colonial Revival



This house retains all original exterior detail.

## 313 STRATFORD ROAD

INFO: 3 story Queen Anne



*When we moved into Beverley Square West the streetlights were not the Victorian street lights we have today. It took some community activism from STRATFORD ROAD to convince local politicians to get the funding to install the beautiful streetlights throughout the 5 blocks of Beverley Square West and along BEVERLEY ROAD.*

*The entirety of Beverley Square West is often referred to by some local politicians as "SWARM," for Stratford, Westminster, Argyle, Rugby and Marlborough Roads.*

**314 STRATFORD ROAD**



This house retains all original exterior detail.

## 319 STRATFORD ROAD

INFO: 3 story Victorian

NOTABLE SITE FEATURES: Three attic windows with crosshatch detail, stained glass windows



This house retains all original exterior detail. History: House has had only one previous owner.

**325 STRATFORD ROAD**



**329 STRATFORD ROAD**



The current owner grew up in this house, and also lived here with her husband where they raised their son who has graduated from college.

**332 STRATFORD ROAD**



This house retains all original exterior detail.

**345 STRATFORD ROAD**



**346 STRATFORD ROAD**



## 350 STRATFORD ROAD

INFO: 3 story Victorian

NOTABLE SITE FEATURES: Configured as 2-family. Bay windows 1st and 2nd floor.



**356 STRATFORD ROAD**



## 20 LEWIS PLACE

YEAR BUILT: 1900

INFO: 3 story Queen Anne

NOTABLE SITE FEATURES: Typical in style for the neighborhood, smaller than most. Three stained-glass windows.



This house retains all original exterior detail.

## 9 LEWIS PLACE

INFO: 3 Story Victorian

NOTABLE SITE FEATURES: Configured as 2-family. Bay windows, 1st and 2nd floor.



This house retains all original exterior detail.

## 230 STRATFORD ROAD

INFO: 3 Story Victorian

NOTABLE SITE FEATURES: Configured as 2-family. Porch on 1st and 2nd floor.

RELATED SITE STRUCTURE: Artist's studio in backyard.



## 241 STRATFORD ROAD

YEAR BUILT: 1898

INFO: Dutch Colonial

NOTABLE SITE FEATURES: Open wrap-around porch. Diamond shaped panes on attic windows.



This house retains all original exterior detail.

## 242 STRATFORD ROAD

NOTABLE SITE FEATURES: Bay windows on 1st and 2nd floor.

RELATED SITE STRUCTURE: Garage, being outfitted with clear roof.



## 253 STRATFORD ROAD

YEAR BUILT: 1900

INFO: 3 story Queen Anne Victorian



This house retains all original exterior detail.

## 260 STRATFORD ROAD

INFO: Colonial Revival



## 265 STRATFORD ROAD

INFO: Colonial Revival



## 276 STRATFORD ROAD

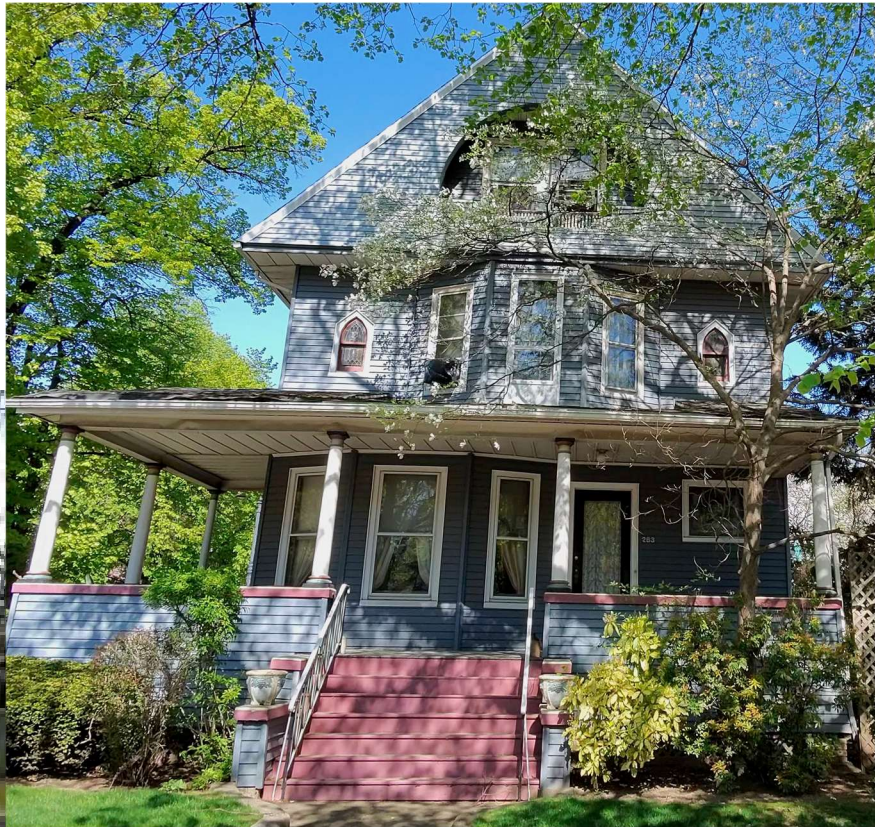
INFO: 3 story Victorian

NOTABLE SITE FEATURES: Configured as 2-family. Enclosed porch.



## 283 STRATFORD ROAD

INFO: 3 story Colonial Revival



This house retains all original exterior detail

## 284 STRATFORD ROAD

INFO: 3 story Queen Anne

NOTABLE SITE FEATURES: Configured as 2-family. Bay windows on 1st and 2nd floor, large wrap-around porch.

HISTORY: The foundation of the house was made from leftover granite blocks from the Brooklyn Bridge construction.



## 289 STRATFORD ROAD

INFO: 3 story Queen Anne

NOTABLE SITE FEATURES: The foundation of the house was made from left over granite blocks from the Brooklyn Bridge construction.



This house retains all original architectural detail.

**295 STRATFORD ROAD**



## 307 STRATFORD ROAD

INFO: Dutch Colonial



This house retains all original architectural details

**308 STRATFORD ROAD**



This house retains all original architectural details

## 314 STRATFORD ROAD

INFO: Queen Anne



This house retains all original architectural details

## 319 STRATFORD ROAD

INFO: 3 story Victorian

Main Facade: Light blue siding, forest green porch. Three attic windows with crosshatch detail.

North Facade: Stained glass windows

South Facade: Stained glass windows, driveway.

Rear Facade: Small deck in back



**320 STRATFORD ROAD**



Remodeled to restore detail.

## 338 STRATFORD ROAD



Rita Joseph, our City Council member, lived here as a child.

**332 STRATFORD ROAD**



This house retains all original exterior detail

## 21 LEWIS PLACE

YEAR BUILT: 1955

INFO: 2 story semi-detached brick

NOTABLE SITE FEATURES: Configured as 2-family. New landscaping.



## 9 LEWIS PLACE

INFO: 3 story 2-family. Bay windows, 1st and 2nd floor.



## 11 MATTHEWS COURT

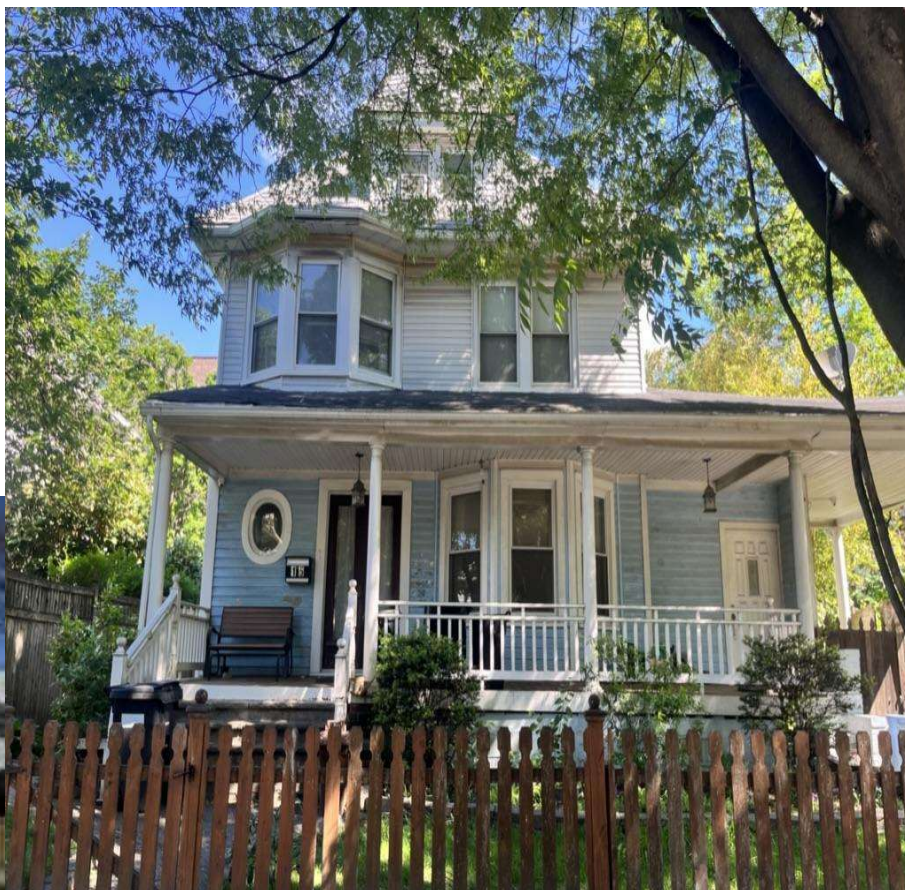


## 12 MATTHEWS COURT



This house retains all original exterior detail.

## 15 MATTHEWS COURT

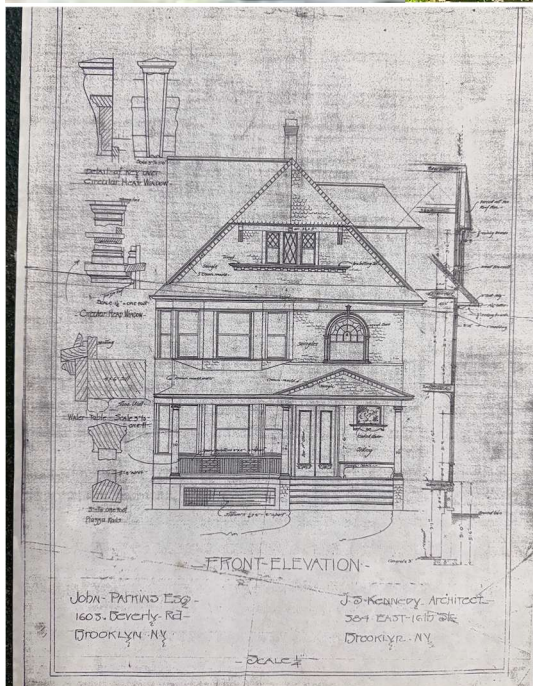


This house retains all original exterior detail.

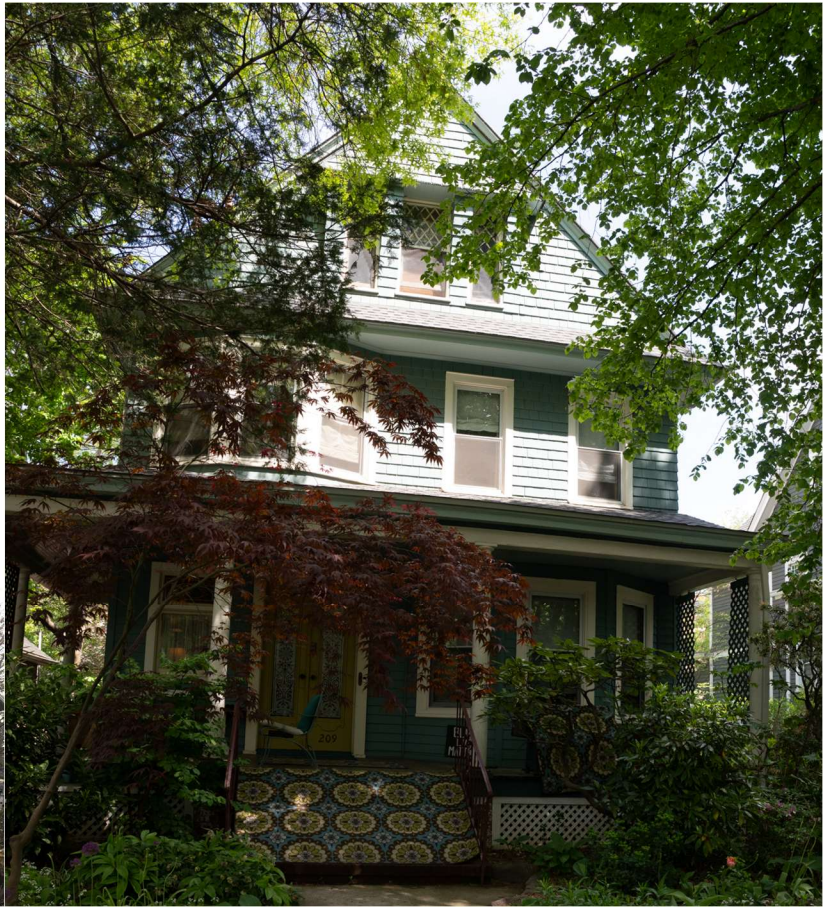
## 16 MATTHEWS COURT

INFO: Queen Anne

ARCHITECT: J.B Kennedy



## 203 WESTMINSTER ROAD



This house retains all original exterior detail. Asphalt shingles were removed to restore original clapboard and shingle

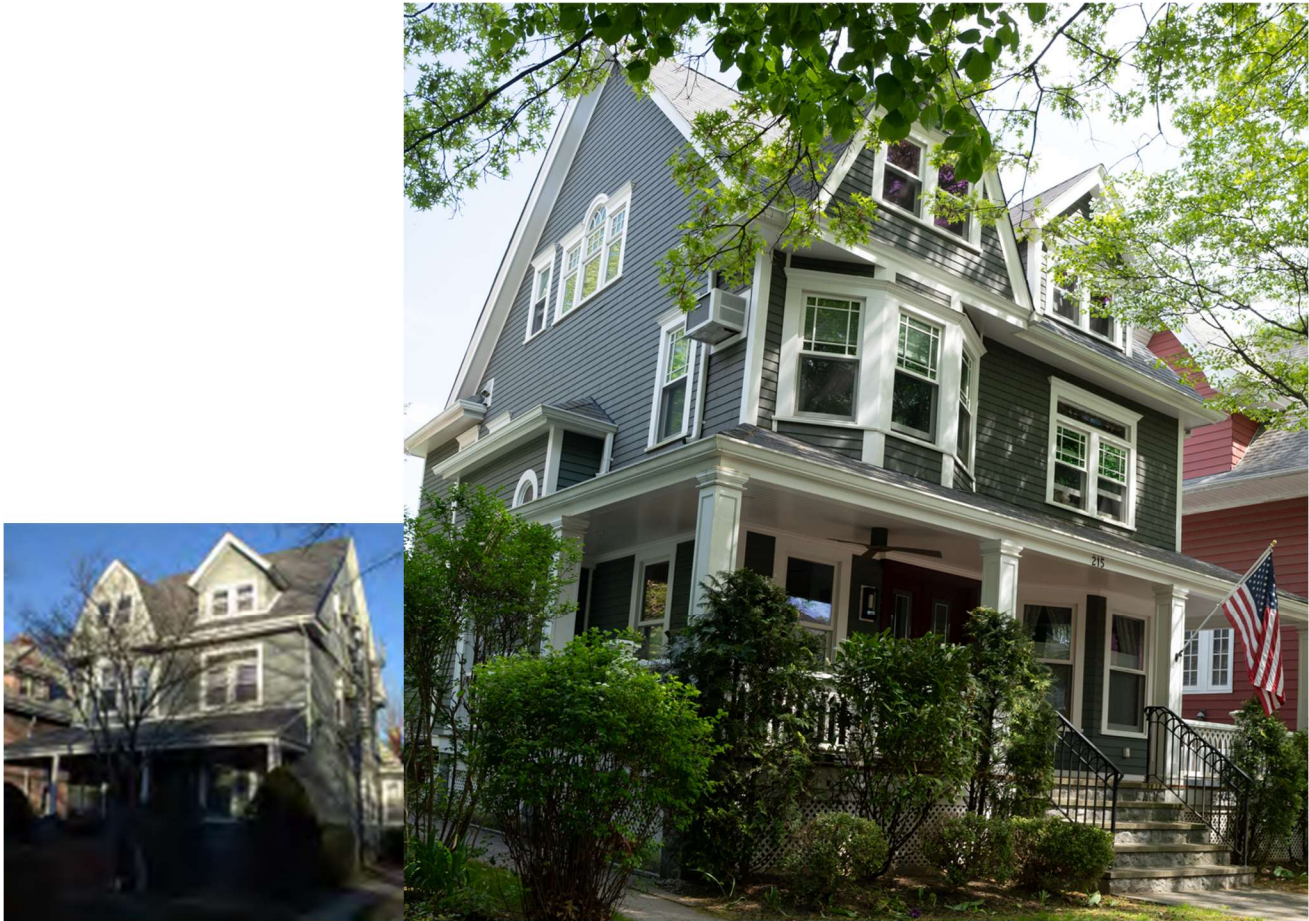
**209 WESTMINSTER ROAD**



This house retains all original exterior detail.

## 215 WESTMINSTER ROAD

INFO: Queen Anne



This house retains all original exterior detail.

**216 WESTMINSTER ROAD**



This house retains original clapboard, shingles and all detail.

## 219 WESTMINSTER ROAD

INFO: Colonial Revival



This house retains all original architectural detail.

## 220 WESTMINSTER ROAD

INFO: Queen Anne



Turret and original architectural detail are intact.

## 221 WESTMINSTER ROAD

INFO: Dutch Colonial



Mansard roof is intact.

## 228 WESTMINSTER ROAD

INFO: Colonial



This house displays original shingles, clapboard and most detail.

## 233 WESTMINSTER ROAD

INFO: Victorian



## 234 WESTMINSTER ROAD

INFO: Victorian



## 239 WESTMINSTER ROAD

INFO: Queen Anne



## 240 WESTMINSTER ROAD

INFO: Queen Anne



This house retains all original exterior detail.

## 245 WESTMINSTER ROAD

INFO: Dutch Colonial



House was restored in 2015 with clapboard, shingles, railings and much original detail.

## 246 WESTMINSTER ROAD

YEAR BUILT: 1922

INFO: Wood frame 3 story, 2 family Victorian

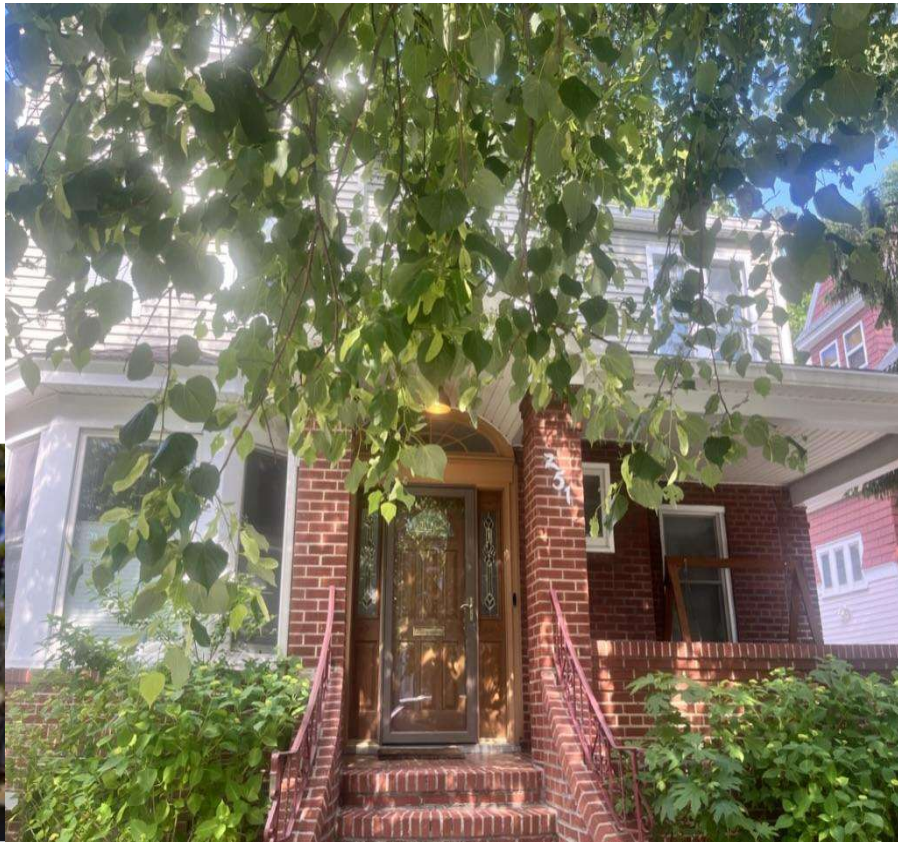
NOTABLE SITE FEATURES: wrap-around porch, bay windows, stained glass, original mantle on fireplace, original floors with inlaid wood, pocket doors, original chimney.



This house is completely original in exterior details.

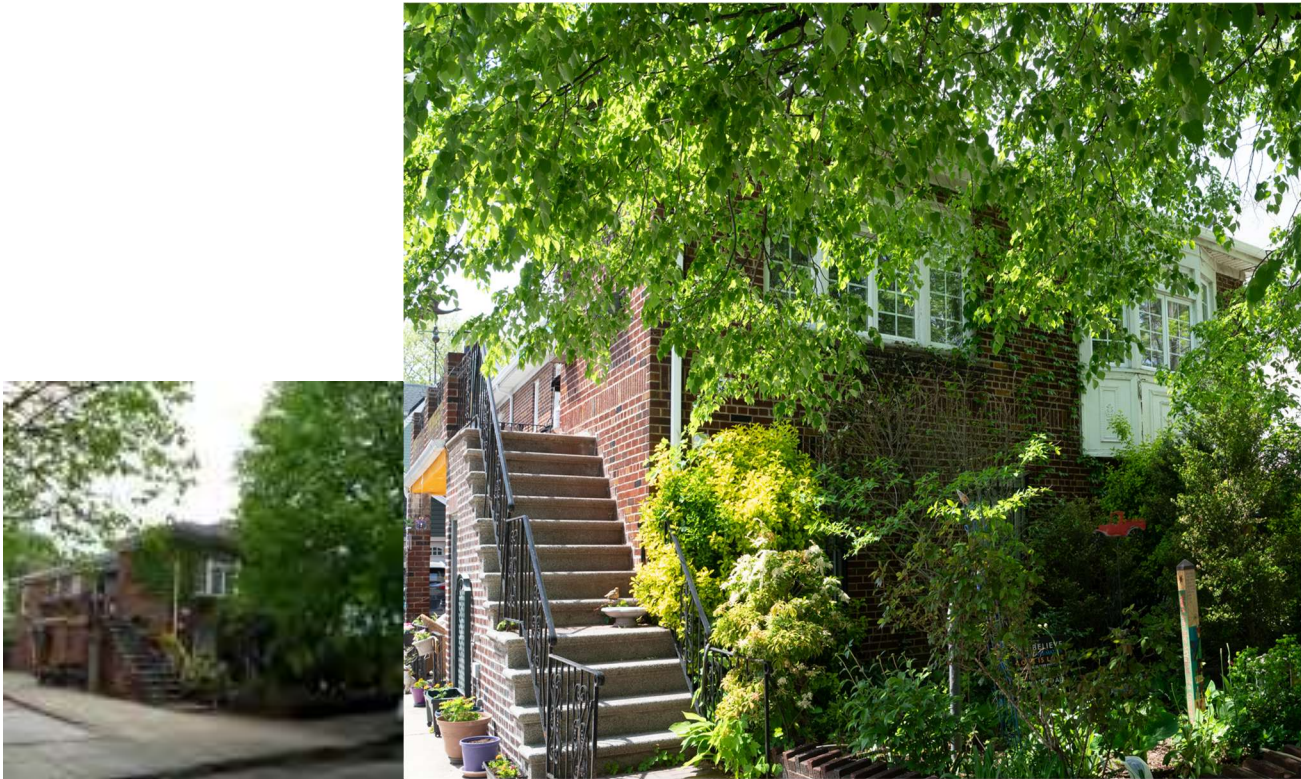
## 251 WESTMINSTER ROAD

INFO: Victorian



## 252 WESTMINSTER ROAD

INFO: Mid Century



This lot had a Victorian house on it that was destroyed in a fire and was rebuilt in the 1950's.

## 257 WESTMINSTER ROAD

INFO:Victorian



This house retains a completely original exterior.

## 258 WESTMINSTER ROAD

INFO: Colonial Revival



*We have lived in this house at 258 WESTMINSTER ROAD for 42 years and love this beautiful Victoroan neighborhood.*

*We are the third family to live here which is a clear indicator of the stability of this area. Our daughters attended P.S. 139 on Cortelyou Road and still have many schoolmates that continue to live here.*

*During Covid, the residents of this neighborhood patronized all the restaurants and small shops and kept all of them in business throughout the pandemic period.*

*We hope that this unique and historical part of Brooklyn can continue to thrive.*

**260 WESTMINSTER ROAD**



Asbestos shingles and front brick extension were removed and restored to a wrap-around porch with cedar siding throughout the exterior in 2021.

**261-263 WESTMINSTER ROAD**



**264-266 WESTMINSTER ROAD**



## 269 WESTMINSTER ROAD

INFO: Queen Anne



Exterior was restored to original plans, moldings were restored.

## 270 WESTMINSTER ROAD

INFO: Queen Anne



This house is the largest on Westminster Road. In 2020, the porch was restored to the original wrap around style with wood railing and columns. Details related to the original plans were added.

## 275 WESTMINSTER ROAD

INFO: Queen Anne



Exterior retains most of the original detail.

**276 WESTMINSTER ROAD**



## 281 WESTMINSTER ROAD

INFO: Victorian



This house retains all original details.

**290 WESTMINSTER ROAD**



## 291 WESTMINSTER ROAD

Dutch Colonial



Exterior is completely original.

## 296 WESTMINSTER ROAD

YEAR BUILT: 1895

INFO: 3 story Queen Anne

NOTABLE SITE FEATURES:: original parquet floors, wainscoting and moldings. garden with grapevine, rose arbors



This house was built by sea captain who left it to his 2 sisters, sold to DiGeronimo family in 1951 and remodeled in 1953.

## 297 WESTMINSTER ROAD

YEAR BUILT: 1899

INFO: Dutch Colonial. Original shingles and clapboards. All original details are intact, 3 original fireplace mantles, 13 stained glass windows original parquet floors, molding in butler's pantry.



There have only been 3 owners at 297 Westminster.

## 302 WESTMINSTER ROAD

INFO: Queen Anne



Home of Flatbush Artist Studio Tour

[www.flatbushartists.org](http://www.flatbushartists.org)

## 303 WESTMINSTER ROAD

INFO: Colonial Revival



Home of [Brave New World Theater Company](#). Columns were restored to original configuration.

## 309 WESTMINSTER ROAD

YEAR BUILT: 1898

INFO: Dutch Colonial

NOTABLE SITE FEATURES: Peaked rounded arch with pagoda style downward slope on third floor front window, bay windows on second and third floors. Open porch. Stained glass window on stair landing between first and second floor. Bay window, stained glass dormer windows on second floor.



*Owned and kept as a one family house by a Brooklyn judge and his family. Converted to a two family house in the 1940s by Joseph Leone - architect. I have a blueprint dated around 1946 when it appears permission was given to convert the house.*

*My husband Eugene and I bought 309 Westminster in 1968. At that time we were members of St. Paul's Church which is located at Church Avenue and St. Paul's Place. Coincidentally, when we told the Parish secretary of change of address, a former parishioner who needed proof of Confirmation had written and said her address was 309 Westminster. Her married name was Perrin. She wrote back stating that her parents lived at 309 from 1903 to 1945. She and her 5 siblings were born in the house. "Father" wanted to move to New York and so the house was sold in 1943 or 1944 but when it came time to move "Mother" would not leave the house. "Father" bought it back and paid \$1000 more than he sold it for. Solid marriage I would say.*

## 312 WESTMINSTER ROAD



In 2012 the exterior was fully restored by removing asbestos shingles and replacing with cedar; also restored columns and wrap around porch, added wood railings.

## 315 WESTMINSTER ROAD

INFO: 3 story Victorian



Most exterior details remain intact.

## 318 WESTMINSTER ROAD

INFO: 3 story Colonial Revival



**324 WESTMINSTER ROAD**

YEAR BUILT: 1897



Removed asphalt shingles and opened porch in 2021. Is being used as a mother/daughter home.

## 329 WESTMINSTER ROAD

INFO: 3 story Queen Anne



Original configuration is intact throughout the exterior.

### 330 WESTMINSTER ROAD

YEAR BUILT: 1897

INFO: Queen Anne

NOTABLE SITE FEATURES: Original fireplace mantle, parquet floors, 2 original stained glass windows, original moldings



*When we purchased this house, 38 years ago. It was configured as a 2 family, with 2 doors on the porch, covered by grey and green asbestos shingles.*

*The outside has been restored to the original cedar, with one outside door, and original mahogany wainscotting on the porch ceiling.*

*It is currently used as a mother/daughter... housing the next generation.*

**336 WESTMINSTER ROAD**

YEAR BUILT: 1897

INFO: Victorian



Asphalt shingles were removed and restored to original clapboard and cedar shingles.

## 342 WESTMINSTER ROAD

INFO: Queen Anne



Intact turret.

## 344 WESTMINSTER ROAD

INFO: Queen Anne



Intact turret.

## 345 WESTMINSTER ROAD

INFO: Queen Anne



The garage for this house was equipped with a revolving platform to accommodate early vehicles that did not have a “reverse” feature.

## 350 WESTMINSTER ROAD

INFO: Queen Anne



*This house was built in 1898 as a wedding present for a member of the Wortman family, who owned it until the mid 1990's.*

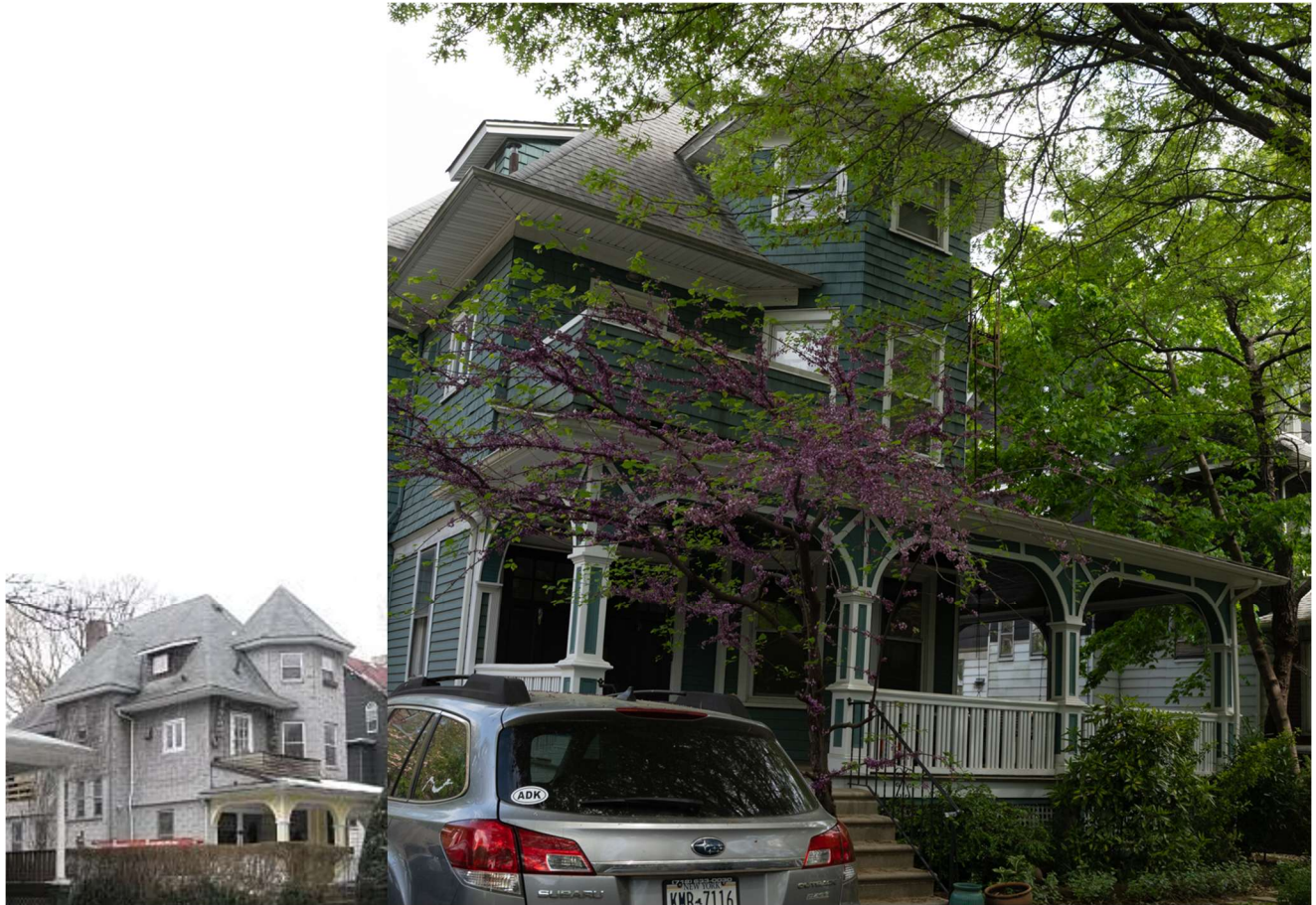
*Years ago, I got a letter addressed to the former owner Dorothy Wortman, President of the Flatbush Garden Society which delighted me, being such an avid gardener myself.*

*When we were having the house painted, we really studied our 1940 tax photo. It was important to my husband to restore the finial on the turret to the original. We worked hard on that and were able to find something very close to the original and we had that put on top of the turret.*

*We have restored all of the stained glass windows. We reclaimed and renovated the garden and have some of the original plantings. When we had the porch redone, we used a newspaper clipping from 1910 for reference.*

## 339 WESTMINSTER ROAD

INFO: Queen Anne



Home of "[Operation Gig](#)" asphalt shingles were removed to expose all original cedar clapboard and shingles. Paint highlights details of original columns.

## 354 WESTMINSTER ROAD

INFO: Colonial Revival



Columns retain original detail.

## 358 WESTMINSTER ROAD

INFO: Colonial Revival



Columns retain original detail.

**1120 BEVERLEY ROAD**

INFO: Queen Anne



Turret and Mansard roof are retained.

## 1028 BEVERLEY ROAD

INFO: Queen Anne



## 1016 BEVERLEY ROAD

INFO: 3 story Queen Anne

NOTABLE SITE FEATURES: Two bay windows, two regular windows and double window garrets. Back door with raking cornice, seven windows, two single window garrets.



*This house is currently home to the [Urbane Arts Club](#) and events venue. Built by a doctor in 1879, donated in 1900 to the Democratic Club who built the extension in 1922.*

*The space was used as a speakeasy throughout the 1920s, and witnessed many colorful events. In February of 1923 an [honored guest was arrested](#) in the middle of his celebratory banquet at the club. In May, a policeman was accused and then cleared of assault charges after his weapon discharged in the building, injuring the chef.*

*In 1942 it became a synagogue.*

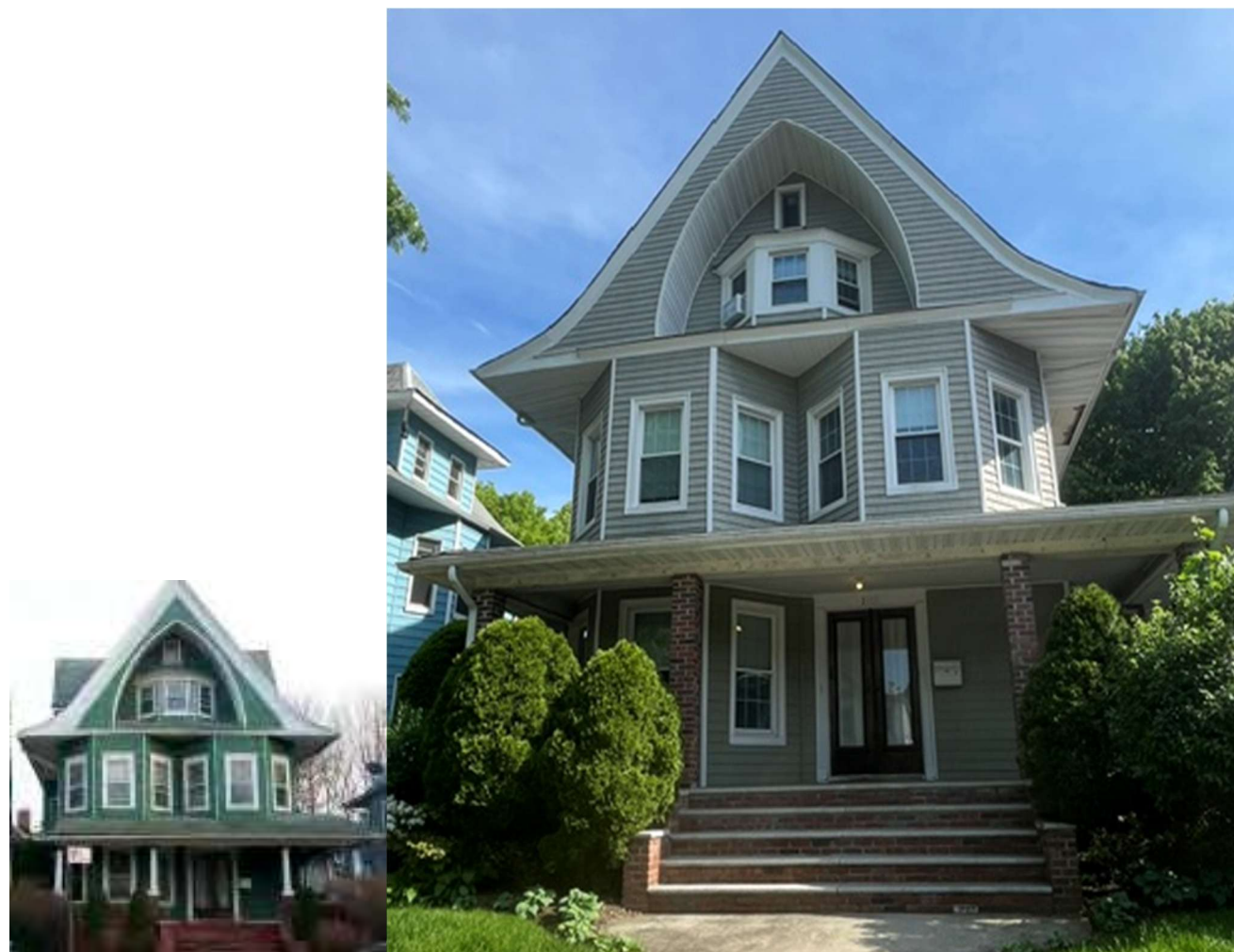
**1104 BEVERLEY ROAD**

INFO: 3 story Queen Anne



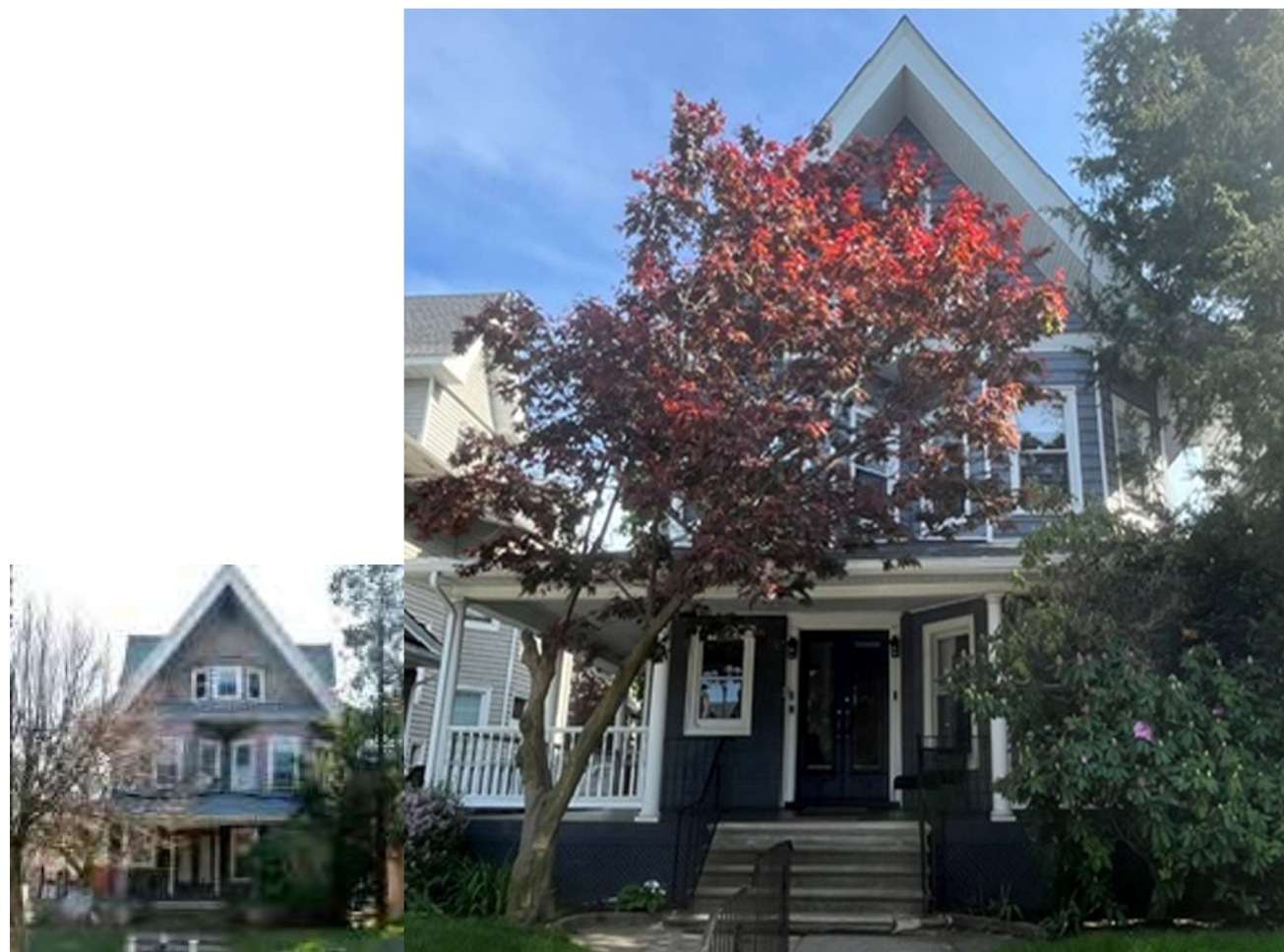
## 1108 BEVERLEY ROAD

INFO: 3 story Dutch Colonial



Removed asbestos shingle and painted. Preserved original architectural details.

**1112 BEVERLEY ROAD**



Removed asbestos shingle and painted. Preserved original architectural details.

**1116 BEVERLEY ROAD**

INFO: 3 story Queen Anne

NOTABLE SITE FEATURES: turret



Turret and Mansard roof are intact.

## 1200 BEVERLEY ROAD

INFO: 3 story Dutch Colonial



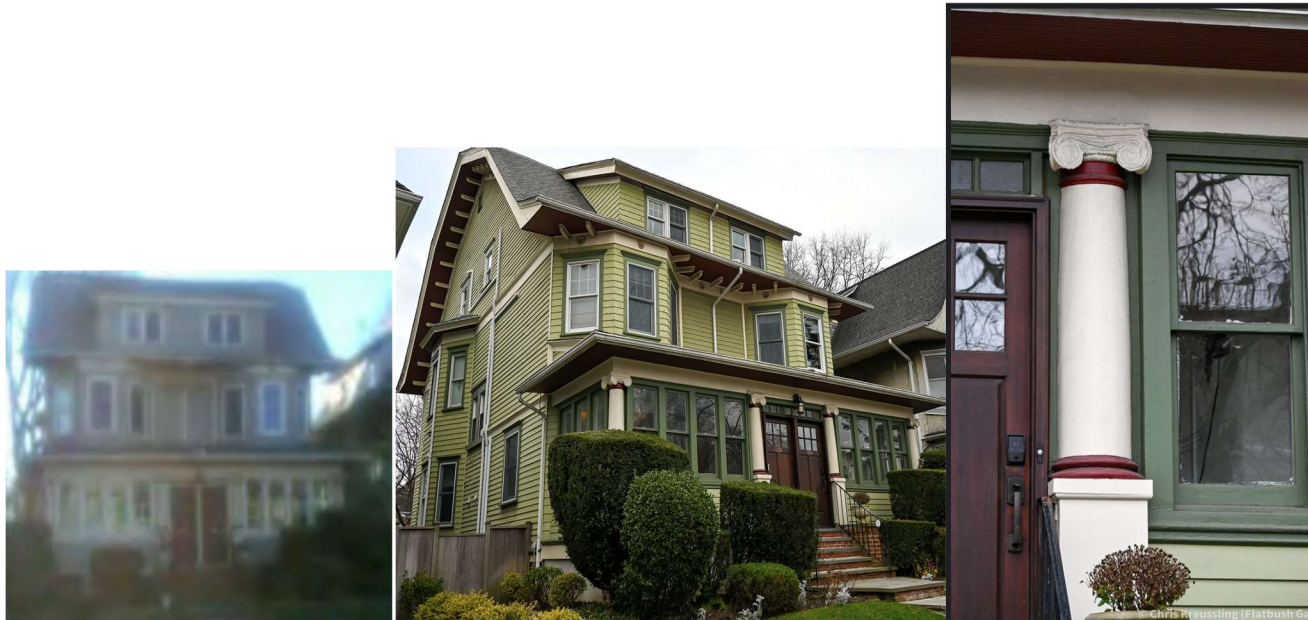
Original configuration and Mansard roof are intact.

## 1206-1208 BEVERLEY ROAD

YEAR BUILT: 1910

INFO: 2 family, 3 story Dutch Colonial

NOTABLE SITE FEATURES: Cedar clapboard siding; exterior moldings; multiple bay windows, enclosed porch (both dwellings); bay windows moldings.



★  
**HOUSES TO LET.  
FLATS TO LET.  
APARTMENTS TO LET.  
CHARLES E. HOTALING,  
441 Sumner av. near McDonough st.**  
\$45 MONTHLY; NEW; SEMI-DETACHED  
house; 9 rooms and bath; elegantly decorated;  
hard wood floors; every improvement; near ele-  
vated station and two trolley lines; 25 minutes  
to New York. 1208 Beverley road Flatbush.

**1208 BEVERLEY ROAD. FLATBU**  
House facing Prospect Park South; 9  
rooms; beautifully decorated; bath; laun-  
dery; parquet floors, etc.; two blocks from Brig-  
ham Beach "L"; rent \$68 monthly. TAUSCH,  
75 1st Flatbush 929 Duane road

**FLATBUSH.**  
Commanding Corner; 1208 Beverley Road.  
Overlooking Prospect Park South.  
HOUSE WITH 9 ROOMS AND BATH.  
Hot and Cold Water on Every Floor.  
Mosaic parquet floors; handsomely decorated.  
**RENT \$45.00 MONTHLY.**  
Apply to OWNER, 339 Ocean Parkway,  
(Corner Avenue C West), Flatbush.

Originally built as a two-family dwelling split down the middle (2300 square feet per side) for 2 sisters. Each unit originally had 6 bedrooms, 1.5 baths.

## 1212 BEVERLEY ROAD

YEAR BUILT: 1895

INFO: Victorian eclectic/American 4 Square freestanding clapboard

NOTABLE SITE FEATURES: Deep wrap-around porch, oval center window, hip roof, large old trees (sycamore; maple) and several ornamentals, fully landscaped.

ADDITIONAL DETAILS: Painted clapboard house with shingle dormers and clean lines, emphasized by broad trim and a simple, contrasting color scheme. The basic square design is relieved by a variety of extensions and an asymmetrical wrap-around porch with Doric columns and an offset front door and steps. Roof has dormers on all sides. Dormer and dining room windows have decorative divided lights, and an oval stained glass window highlights the front facade.



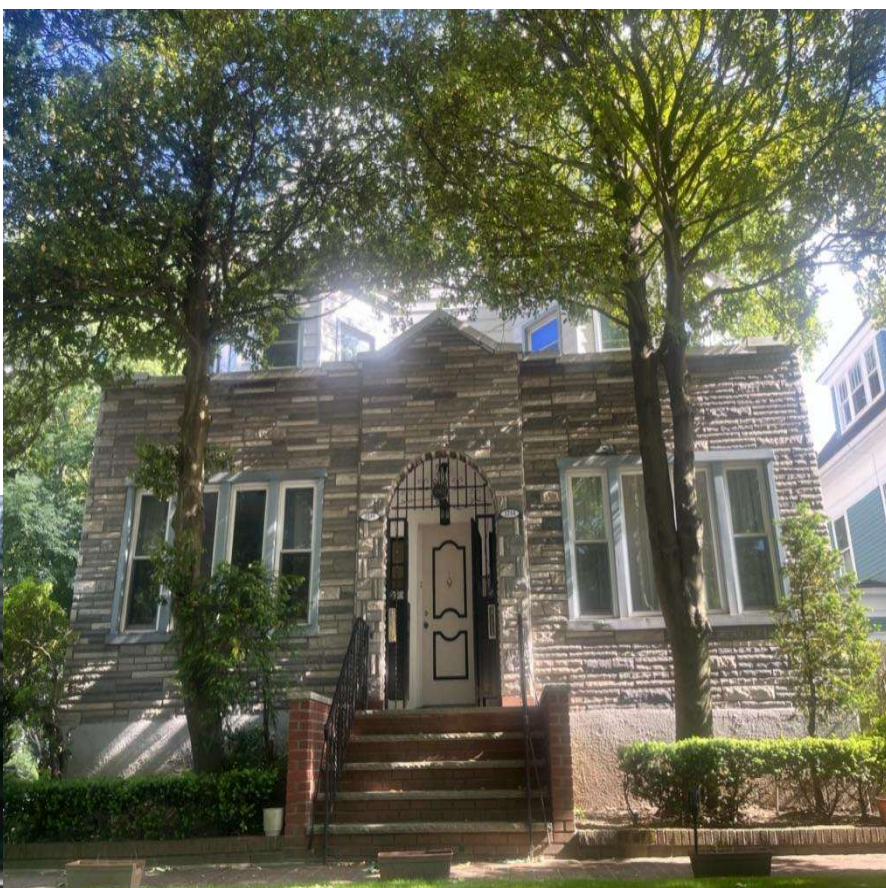
*There are many interesting things to say about my house.*

*A roofer found a child's collection of antique cigar bands and a school boy notebook with a few essays in my attic.*

*We found lots of old spring bedsteads and empty liquor bottles in the eaves, left behind by transitory boarders of what was at one time a rooming house.*

*But the story of how difficult it was to rescue this old wreck, transform it back to its original glory and find myself trying to rescue it again may be the most interesting story of all.*

**1214-1216 BEVERLEY ROAD**



## 1030 BEVERLEY ROAD

INFO: Colonial Revival  
ARCHITECT: John Petit



*This house was formerly owned by the O'Brien family, the brother of former NYC Mayor [John P. O'Brien](#).*

*This house was at one time the headquarters for the Brooklyn Democratic Party.*

**1203 BEVERLEY ROAD**



Original details are intact.

